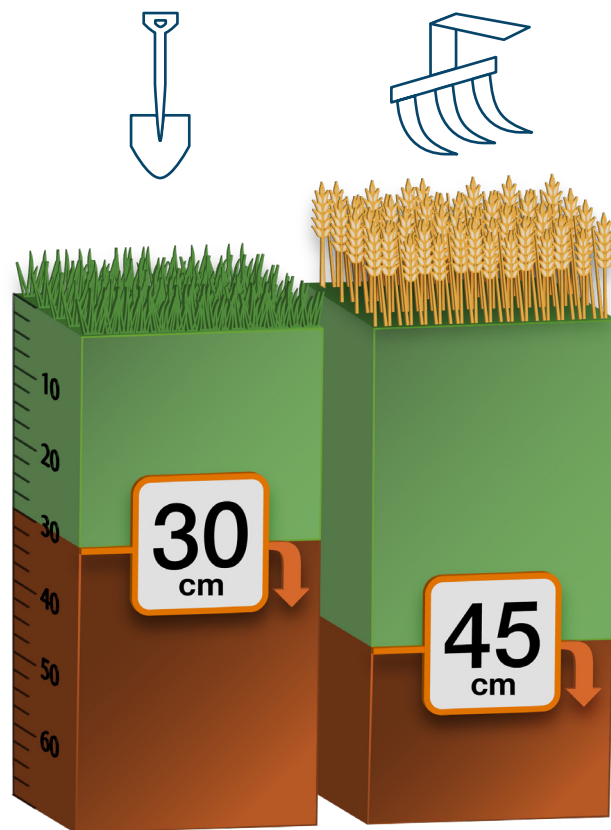


Ground Disturbances in the Prescribed Area

You can only dig to certain depths in the prescribed area without consent from the pipeline company. Contact the pipeline company if the depth meets or exceeds what's shown on the graph below.



Conventional activities

Less than 30 cm deep:
do not need pipeline company's consent

30 cm or deeper:
must get the pipeline company's consent

Agricultural activities

Less than 45 cm deep:
do not need pipeline company's consent

45 cm or deeper:
must get the pipeline company's consent

Find out more

Find out more about the Canada Energy Regulator by visiting us online at www.cer-rec.gc.ca.

Be sure to follow us on social media for the latest updates.



For copies of any CER publication or for more information, contact us:

ONLINE: www.cer-rec.gc.ca
EMAIL: info@cer-rec.gc.ca
TOLL FREE: 1-800-899-1265

Write us or visit our library at:

Canada Energy Regulator
Suite 210, 517 Tenth Avenue SW
Calgary, Alberta T2R 0A8

© Her majesty the Queen in the Right of Canada 2020 as represented by the Canada Energy Regulator

Living and Working Near Pipelines

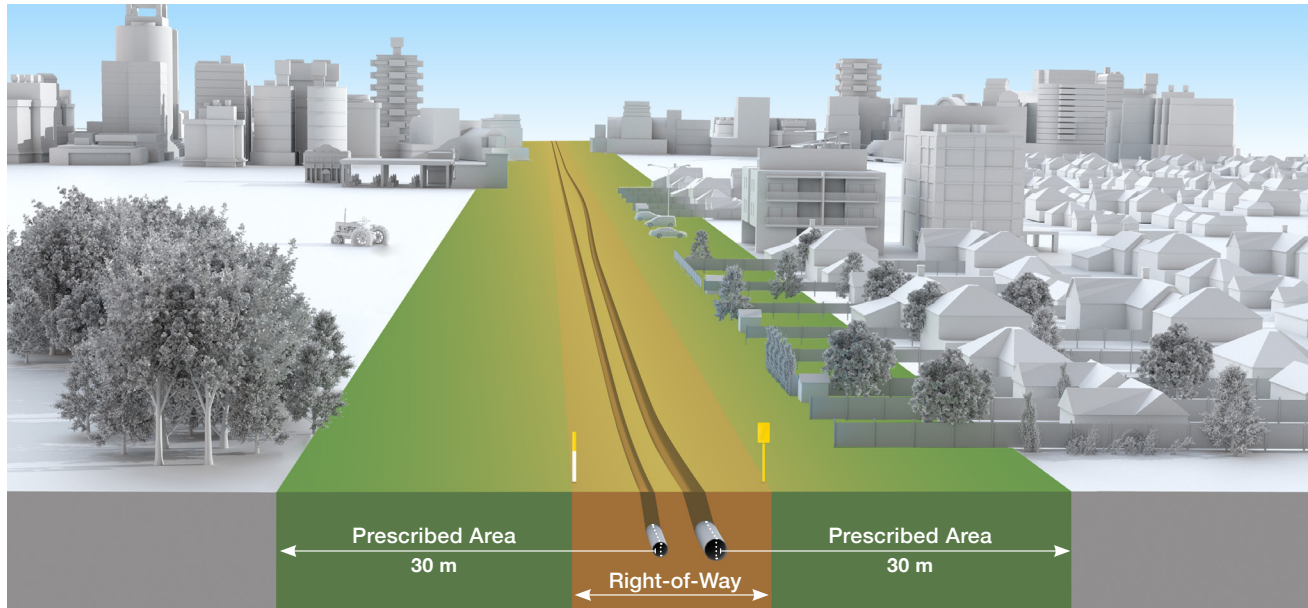
Cat. No. NE23-55/2020E-1 (PDF)
ISBN 978-0-660-35068-4

Cat. No. NE23-55/2020E-1 (Paper)
ISBN 978-0-660-35069-1

Living and Working Near Pipelines



Pipelines Where You Live and Work



The CER takes action to protect Canadians and the environment. We regulate natural gas, oil, and commodity pipelines that extend beyond provincial, territorial or national boundaries. **Unauthorized activities on or around these pipelines are unsafe and illegal. If pipelines are damaged, the result could be very serious.**

Facts about pipelines

Pipeline marker signs only show a pipeline is in the area. You must get a locate from the company to know the exact location of a pipeline.

You need a new locate when:

- your project goes outside the limits of your first locate
- the One Call ticket has expired
- the locate marks and flags are gone

The amount of ground cover over the pipeline can be shallower in some places than others due to erosion, terrain, human activity, and other factors.

Provincially regulated buried pipes and cables may be

closer to the surface than federally regulated pipelines.

Even if there is no sign, a pipeline (or other buried pipes and cables) could be present in your intended work area.

Why would you need to click or call before you dig

If you don't click before you dig and locate the buried pipes and cables in your work area, you could cause:

- damage to buried pipes and cables
- utility service disruptions and expensive repair costs
- potential rupture, fire, release of product from the pipeline
- environmental damage
- injury or death
- regulatory penalties

How to resolve disputes with the pipeline company

If you and the pipeline company cannot reach an agreement:

- you or the pipeline company can contact the CER for assistance
- the CER offers an Alternative Dispute Resolution service, a voluntary way to resolve disputes

Working Near Federally Regulated Pipelines

1. Don't just dig. Plan ahead. Look for pipeline marker signs at the site. It takes time to locate the pipes and cables and to get written consent, if needed.
2. Get written consent from the pipeline company before any ground disturbance 30 cm (12 in) or deeper in the prescribed area.
3. Contact **www.clickbeforeyoudig.com** or a one-call centre to have the underground pipes and cables located. In the Territories, contact the pipeline company or utility owner directly. You may need to be on site when the technician comes.
4. Know the meaning of the pipeline markings. Be on site when the pipe is located to get the safety information in person if you can.
5. You must give everyone doing work on your behalf the safety information they need: contractors, subcontractors, family members, volunteer helpers, and employees.
6. Federally regulated pipeline companies must respond to a locate request in 3 working days.

**KNOW WHAT'S
BELOW.**
ClickBeforeYouDig.com

